



Fairlawn Court, London, W4 5EE

£495,000

WHITMAN & CO.

SALES · LETTINGS · COMMERCIAL

- Ground floor mansion flat
- 19'11 Reception room with bay window
- Centrally located close to numerous amenities
- 620 sqft of accommodation
- Double bedroom with fitted wardrobes
- No onward chain

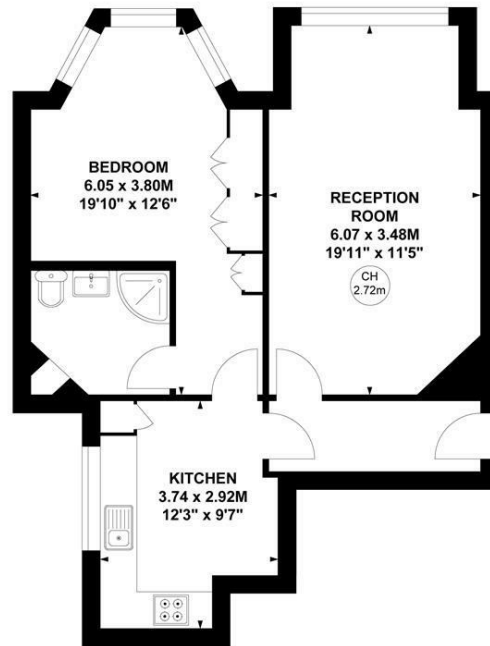
Tenure - Leasehold
 Lease Length - 174 Years remaining
 Ground Rent - £50 pa
 Service Charge - £2087 pa
 Local Authority - Ealing
 Council Tax - Band D

THE PROPERTY

An immaculately presented and spacious one-bedroom apartment on the ground floor of this handsome red brick mansion block overlooking the green located a couple of minutes walk from Chiswick Park station and Chiswick High Road. The accommodation totalling 620 sqft comprises a 19'11 reception room with a bay window, a double bedroom with fitted wardrobes and bay window, a fitted kitchen, a modern shower room, an entrance hall and communal gardens. Fairlawn Court is located within a short walk of numerous local shops, cafes and restaurants both in the immediate vicinity and on Chiswick High Road. Transport links include Chiswick Park and Turnham Green stations, the 94 bus route and the A4/M4 for routes in and out of London. No onward chain.

Fairlawn Court, W4

Approximate Gross Internal Area
 58.00 sq m / 620 sq ft

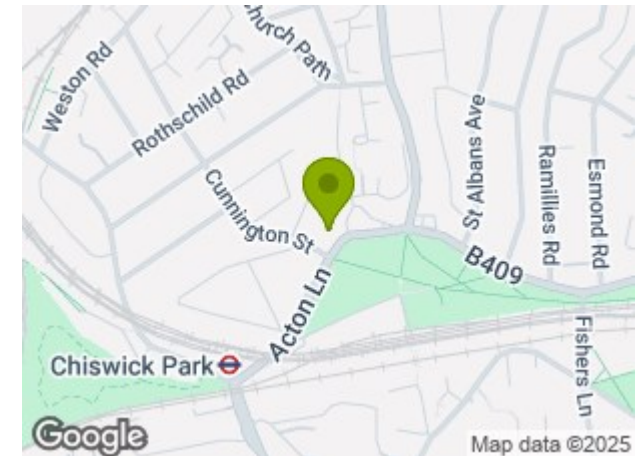


Key :
 CH - Ceiling Height

Ground Floor

Not to scale, for guidance only and must not be relied upon as a statement of fact.
 All measurements and areas are approximate only

SITUATION



5-7 Turnham Green Terrace, Chiswick, London, W4 1RG

Tel 020 8747 8800

E-mail sales@whitmanandco.com

Website www.whitmanandco.com